



EvaporationWorks

EVAPORATION. AERATION. BIOREMEDIATION.

Environmental Control Interface

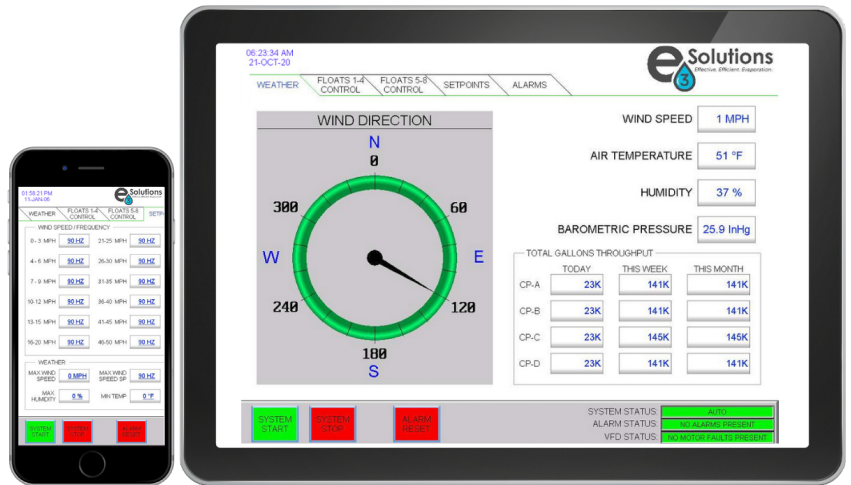
Environmental Control Interface (ECI)

Allows additional weather control and programming capabilities to match E3's Evaporation Systems to the local conditions, alleviate overspray, and increase evaporation in real-time. The ECI can slowdown or shutdown E3's Evaporator System remotely from the convenience of your computer or mobile device.

- Site Specific Settings
- Remote Access
- Optional Remote Camera

ECI's Real-Time Functions:

- Wind Speed & Direction
- Relative Humidity
- Air Temperature
- Barometric Pressure
- Site Specific Set Points
- Water Throughput Totalizer
- Downloadable Stats



HMI 15" LCD Interface

State-of-the-art Weather Station



HUMAN-MACHINE INTERFACE (HMI) & PROGRAMMABLE LOGIC CONTROLLER (PLC)

The ECI comprises a Human-Machine Interface (HMI), Programmable Logic Controller (PLC), and Variable Frequency Drive (VFD) to allow automatic and manual control of E3 atomizers according to real-time on-site weather data.

The ECI changes the water droplet size automatically according to the wind speed & direction, relative humidity, barometric pressure, and air temperature. ECI programming allows continuous operation for maximum evaporation.